

Quick guide

USB GPS 8.0



For your safety

Read these simple guidelines. Not following them may be dangerous or against local laws and regulations. For further information, read the complete user guide.



DEDICATED CUSTOMER SUPPORT

Our Customer Support Executives are always ready to solve your issues on priority.



KEEP YOUR DEVICE DRY

Your device is not water-resistant. Keep it dry.



DO NOT OPEN THE DEVICE

Unauthorized tempering of device may lead the cancellation of warranty.



AUTHORIZED SERVICE

Only authorized service centers will use to repair or solve the issues.



ACCESSORIES

Use only authorized accessories



ANTENNA'S

Use only authorized antenna's



OUTSIDE USE

Put the antenna in open area, make sure there do not have any obstacle in between sky and antenna.

Contact Information :

- For further inquiries or assistance, contact us on WhatsApp at +91-8690444805/9358409099.
- Operating Hours: 10 AM to 6 PM.
- Days: Monday to Saturday. (Sunday off)

Introduction

- Thank you for choosing the **Raivens USB GPS 8.0**. This advanced device is specifically engineered to meet the stringent requirements of **banking systems**, enabling reliable and accurate location tracking to support regulatory compliance, security, and operational efficiency. The device is compatible with a variety of government and financial software applications, ensuring seamless integration into modern banking environments.
- Equipped with the latest technology, the **USB GPS 8.0** supports both **IRNSS** (Indian Regional Navigation Satellite System) and **NavIC** (Navigation with Indian Constellation), furnishing robust real-time positional data essential for location verification, audit trails, and **secure banking transactions**.
- Before connecting and using the GPS device in your banking system, please follow all setup and operational instructions provided below to guarantee optimal performance and secure functionality.

Key features

- **Multi-constellation Support:** Supports **GPS, GLONASS, BeiDou, Galileo, QZSS, and IRNSS (NavIC)** for global positioning coverage.
- **Dual Antenna Design:** Comes with both a built-in patch antenna and an onboard chip antenna, enabling automatic antenna switching for optimal signal reception.
- **Dual-Band Accuracy:** Utilizes L1 and L5 frequency bands for faster satellite fix and improved positioning precision.
- **High Positioning Accuracy:** Achieves horizontal accuracy of less than 1.8 meters in autonomous mode.
- **Fast Time-to-First-Fix (TTFF):** Cold start TTFF is **under 13 seconds** when assisted with AGPS, ensuring quick location acquisition.
- **Strong Signal Reception:** High acquisition sensitivity (around -147 dBm) allows for reliable performance even in weak-signal environments.
- **Compact and Efficient:** Designed for easy integration in space-constrained applications while maintaining high performance.

Compatibility

- The Raivens USB GPS 8.0 is compatible with the banking BC which you have assigned.

Parts :-



- 1 USB male connector
- 2 Power indicator
- 3 Signal Indicator
- 4 Antenna connector

To get the **signal** asap make sure the **external antenna** is **connected** .

Installation

Driver Installation

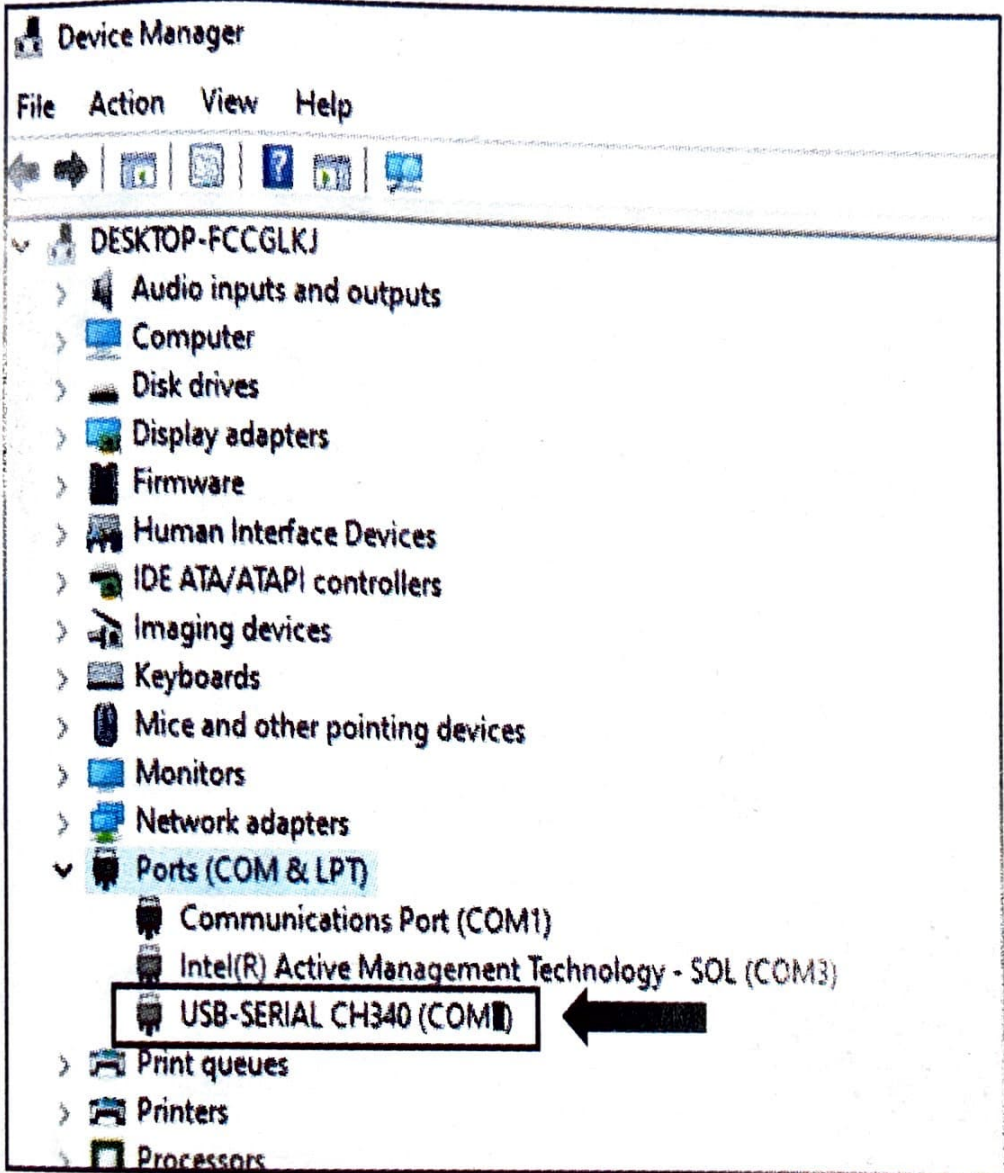
1. Online Download:

- Open your browser and visit the official Raivens website at <https://help.bankingdevice.com>.
- Navigate to the 'Download' section.
- Click on the 'Download' button to initiate the driver download.
- After the download completes, locate the downloaded ZIP file in your Downloads folder.
- Right-click on the ZIP file and select 'Unzip' or 'Extract'.
- Once extracted, open the unzipped folder and locate the "driver-for-64bit.exe" file.
- Double-click on the file to start the installation process.
- Follow the on-screen prompts to complete the installation.

2. Via QR Code:

- Use your smartphone or any QR scanner device to scan the provided QR code.
- This will direct you to the driver download page.
- Follow the download and installation instructions from there.





Initial use/ Device testing :

- Open help.bankingdevice.com
- Navigate to the checkbox "I agree to the Terms and Conditions and Privacy Policy".
- Navigate to "continue".
- Navigate to "connect device".
- Look for the usb serial/usb CH340C.
- Navigate to "connect".
- Navigate to "RUN DEVICE TEST".
- Now the test has been started, wait for a while to get device connected to satellites.
- If device not connected make sure to use external antenna or put the device outside.

Support :

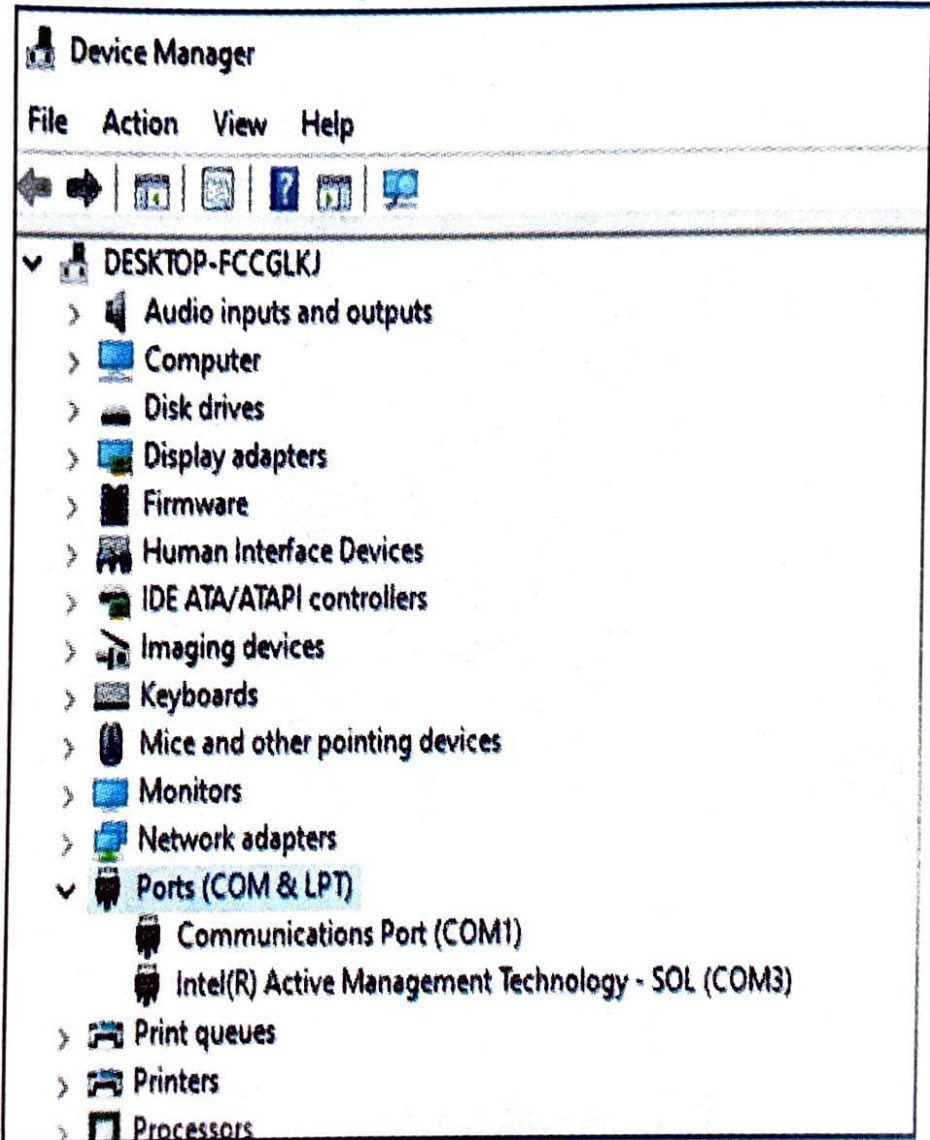
- In the event of technical difficulties or other issues with the Raivens USB GPS 8.0
- Reach out to our support team through the whatsapp at +91-8690444805. or via mail - support@raivens.com.
- Provide detailed information about the issue faced for efficient assistance.

Safety & Maintenance Tips :

- Keep the GPS device away from extreme temperatures and moisture.
- Ensure the USB port is clean and free from debris before connecting the GPS.
- Regularly update the driver for optimal performance.

Troubleshooting Steps

Device not showing in device manager :



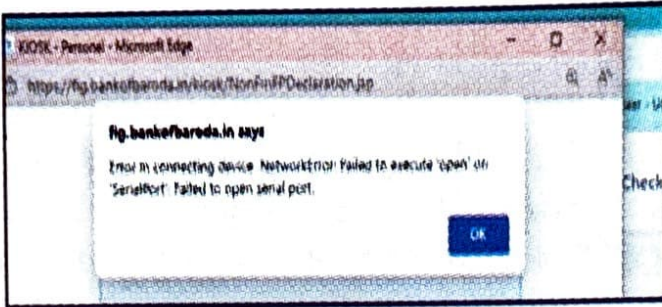
Solution :

- Make sure the device is connected directly to the PC, without using any extension cable or hub.
- Make sure the driver is installed. If not, please install the required driver.
- If the problem still continues, feel free to contact our support team for assistance.

Serial port issue :

❗ Error connecting to device: Failed to execute 'open' on 'SerialPort': Failed to open serial port.

OR



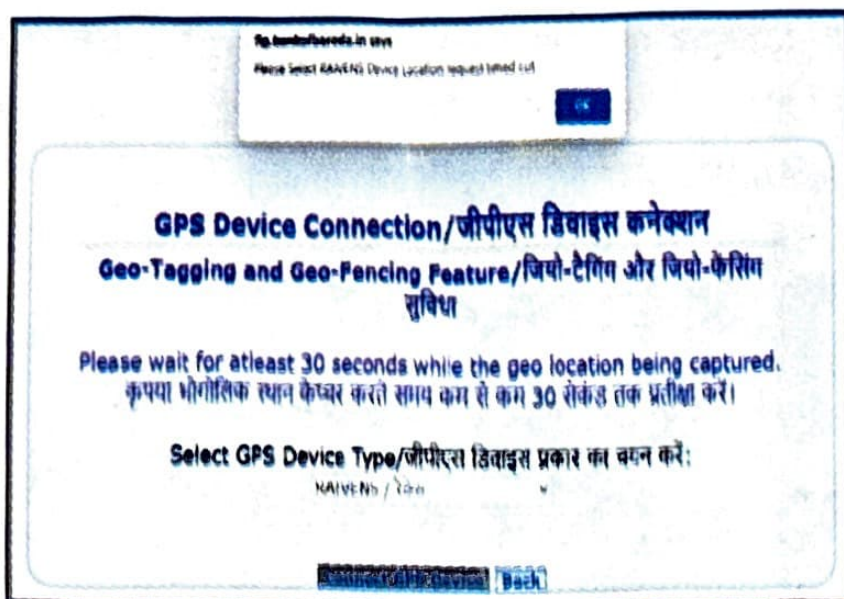
Solution :

- Make sure the serial port is opened in only one application or location at a time.
- If the issue persists, try unplugging and reconnecting the device.
- If the problem still isn't resolved, please contact our support team for further assistance.

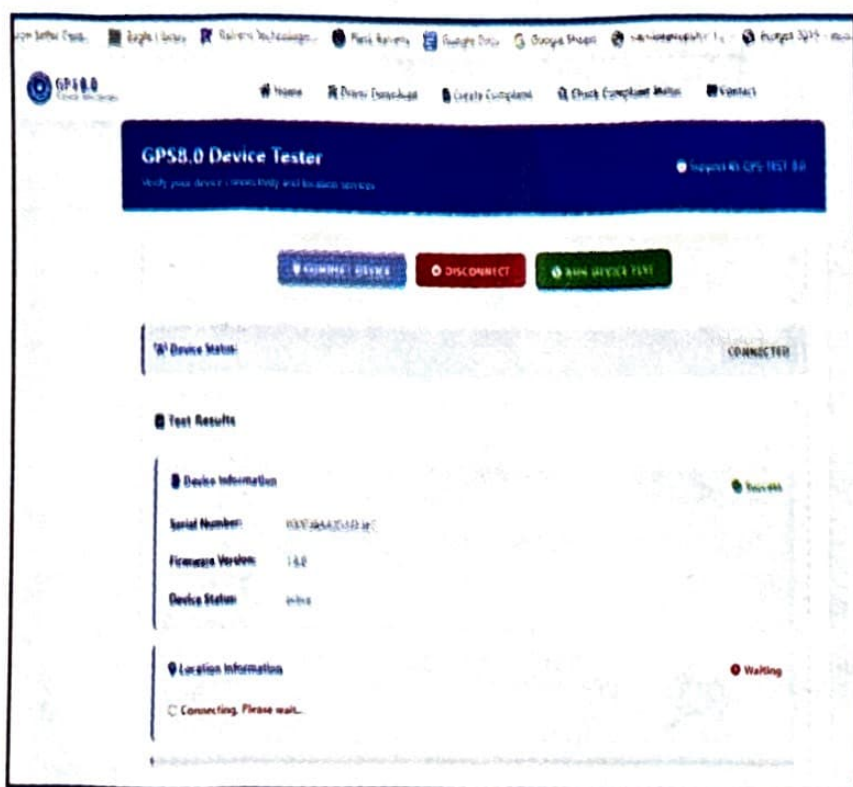
Placement example of external antenna :



RAVENS Device Location request timed out :



OR



Solution :

- Place the GPS device near a window or in an open outdoor area.
- Make sure the external antenna is properly connected and placed outside if you are using.
- Ensure there is no obstruction between the device or antenna and the sky.
- Avoid using the device under metal roofs, inside closed rooms, or inside drawers or cabinets.
- Obstructions like walls, ceilings, or metal sheets can block GPS signals.
- If the issue continues, please contact our support team.

Warranty void terms and conditions :

- Warranty becomes null for the Raivens USB GPS 8.0 . If it is not professionally installed. Raivens Technologies Pvt. Ltd. will not bear any responsibility for issues or damages arising from a faulty installation.
- Any exposure to water, extreme temperatures, mishandling, or unauthorized tampering will render the warranty void. In addition, using the device with incompatible electrical setups also leads to forfeiture of warranty.
- Damages or issues that arise indirectly from using or the inability to use the Raivens USB GPS 8.0 are not covered under the warranty.

Terms of use :

- Raivens Technologies Pvt. Ltd. provides this product "as is," with no express or implied warranties. This includes, but is not limited to, warranties of merchantability, fitness for a particular purpose, or non-infringement of intellectual property rights.
- Users assume full responsibility for using the device. The company is not liable for any direct or indirect damages resulting from its use or inability to use the device, including personal injury, property damage, data loss, or any other consequences.
- Users must ensure the device is not used in any manner that infringes on third-party intellectual property rights. Any claims or legal disputes arising from misuse of the product are solely the user's responsibility.
- Information in the manual does not represent the complete terms of sale. No guarantees are given, whether stated or implied, about the product or content in this manual.
- Raivens Technologies Pvt. Ltd. is not responsible for interruptions in device operation due to uncontrollable factors such as natural disasters, electrical failures, or network issues.
- Any third-party claims, including intellectual property violations, are not the liability of Raivens Technologies Pvt. Ltd. The user agrees to indemnify the company, its affiliates, and partners from any claims, losses, or legal fees arising from violations of these terms or misuse of the device.
- Users must avoid any illegal activity or conduct that could expose the company to legal risk. Use of the device for unlawful purposes is strictly prohibited.
- The company reserves the right to modify, suspend, or discontinue the product or its services without prior notice. By continuing to use the device, users accept these conditions and waive any claims against the company for such actions.

Conclusion:

- We hope this manual helps you set up and enjoy the benefits of your Raivens USB GPS 8.0. Your feedback and satisfaction are essential to us. With the additional support of IRNSS and NavIC, we're confident in the device's ability to deliver unparalleled performance.